

NO: \_\_\_\_\_

**SUPPLEMENTAL BID BULLETIN NO. 1**

**TITLE** : Supply, Delivery and Installation of Office Furniture for the DSWD Central Office - Malasakit Building  
**ITB NO.** : GOP/20-DSWD-044  
**DATE** : 18 August 2020

This Supplemental/Bid Bulletin is issued to all prospective bidders announcing response to the queries/clarifications of prospective bidders and amendments/changes in the Bidding Documents, as follows:

**I. Queries/clarifications of the Prospective Bidders**

**Question:** What can we provide if our Tax Clearance will expire on 30 August 2020?

**Answer:** If the deadline for submission and receipt of bids is on 26 August 2020, your Tax Clearance Certificate is still valid. Provided, that the deadline for submission and receipt of bids is not move on a later date from 30 August 2020. However, your updated and valid Tax Clearance Certificate will still require by the BAC during Post-qualification Stage. Failure to submit your updated and valid Tax Clearance Certificate during the Post-qualification shall be ground of your disqualification for award.

**Question:** How are we going to have a copy of the reference pictures of your furniture requirements? Are you going to release it through the bid bulletin? Or you'll send it through email individually?

**Answer:** Any changes/amendments that will be made in the bidding documents will be posted through a supplemental/bid bulletin in the PhilGEPS and DSWD Websites and in conspicuous places within the DSWD premises assigned to the Bids and Awards Committee.

**II. Amendments/Changes in the Bidding Documents**
**A. Section II. Invitation to Bid and PhilGEPS Posting**

PARTICULARS	FROM	TO
Lot No. 1 - Combi Roller Window Blinds – unit of measure	piece	sq.m.
Lot No. 2 - Executive Table with Side Table – unit of measure	piece	set
Lot No. 2 - Office Sofa Set – unit of measure	piece	set

**B. Section III. Bid Data Sheet**

<b>PARTICULARS</b>	<b>FROM</b>	<b>TO</b>
ITB Clause 13.2 - Lot No. 1 - Combi Roller Window Blinds – unit of measure	piece	<b>sq.m.</b>
ITB Clause 13.2 - Lot No. 2 - Executive Table with Side Table – unit of measure	piece	<b>set</b>
ITB Clause 13.2 - Lot No. 2 - Office Sofa Set – unit of measure	piece	<b>set</b>
ITB Clause 28.3 (a) - Lot No. 1 - Combi Roller Window Blinds – unit of measure	piece	<b>sq.m.</b>
ITB Clause 28.3 (a) - Lot No. 2 - Executive Table with Side Table – unit of measure	piece	<b>set</b>
ITB Clause 28.3 (a) - Lot No. 2 - Office Sofa Set – unit of measure	piece	<b>set</b>

**C. Section V. Special Conditions of Contract**

<b>PARTICULARS</b>	<b>FROM</b>	<b>TO</b>
GCC Clause 1.1 (j) - Lot No. 1 - Combi Roller Window Blinds – unit of measure	piece	<b>sq.m.</b>
GCC Clause 1.1 (j) - Lot No. 2 - Executive Table with Side Table – unit of measure	piece	<b>set</b>
GCC Clause 1.1 (j) - Lot No. 2 - Office Sofa Set – unit of measure	piece	<b>set</b>

**D. Section VI. Schedule of Requirements**

<b>PARTICULARS</b>	<b>FROM</b>	<b>TO</b>
Summary of Deliverables:	Approved Budget for the Contract (in Philippine Peso)	<b>Delivery Period</b>
Summary of Deliverables: - Lot No. 1 - Combi Roller Window Blinds – unit of measure	piece	<b>sq.m.</b>

PARTICULARS	FROM	TO
Summary of Deliverables: - Lot No. 2 - Executive Table with Side Table – unit of measure	piece	set
Summary of Deliverables: - Lot No. 2 - Office Sofa Set – unit of measure	piece	set
Summary of Deliverables: - Delivery Period – Lot No. 1	Sixty (60) Calendar Days upon receipt of Notice to Proceed	<b>Seventy-Five (75) Calendar Days upon receipt of Notice to Proceed</b>
Summary of Deliverables: - Delivery Period – Lot No. 2	Thirty (30) Calendar Days upon receipt of Notice to Proceed	<b>Sixty (60) Calendar Days upon receipt of Notice to Proceed</b>
Summary of Deliverables: - Delivery Period – Lot No. 3	Forty-Five (45) Calendar Days upon receipt of Notice to Proceed	<b>Sixty (60) Calendar Days upon receipt of Notice to Proceed</b>

Please see attached **revised Schedule of Requirements**. Submission of not updated Schedule of Requirements based on the amendments/changes made shall be ground of your disqualification for award.

**E. Section VII. Technical Specifications**

PARTICULARS	FROM	TO
Lot No. 1 - SIDE PANEL (MODULAR PARTITION)	<ul style="list-style-type: none"> <li>• Xxx...</li> <li>• Panel thickness : 4.68 to 5 cm</li> <li>• Xxx...</li> <li>• Xxx...</li> <li>• Xxx...</li> <li>• Xxx...</li> <li>• Xxx...</li> </ul>	<ul style="list-style-type: none"> <li>• Xxx...</li> <li>• <b>Panel thickness : 4.50 to 5 cm</b></li> <li>• Xxx...</li> <li>• Xxx...</li> <li>• Xxx...</li> <li>• Xxx...</li> <li>• Xxx...</li> </ul>
Lot No. 1 - FRONT PANEL (MODULAR PARTITION)	<ul style="list-style-type: none"> <li>• Xxx...</li> <li>• With Built in outlet for LAN and electrical wiring</li> <li>• Panel thickness : 4.68 to 5 cm</li> <li>• Xxx...</li> <li>• Xxx...</li> <li>• Xxx...</li> <li>• Xxx...</li> <li>• Xxx...</li> </ul>	<ul style="list-style-type: none"> <li>• Xxx...</li> <li>• <b>With Built in outlet for LAN particularly RJ45 Network Nodes Socket Faceplate 2-gang and Universal outlet with grounding 2-gang electrical wiring</b></li> <li>• <b>Panel thickness : 4.5 to 5 cm</b></li> <li>• Xxx...</li> <li>• Xxx...</li> <li>• Xxx...</li> </ul>

PARTICULARS	FROM	TO
		<ul style="list-style-type: none"> <li>• Xxx...</li> <li>• Xxx...</li> </ul>
<p>Lot No. 2 - EXECUTIVE TABLE WITH SIDE TABLE</p>	<ul style="list-style-type: none"> <li>• Xxx...</li> <li>• MDF Table, Steel legs &amp; Modesty, Bullnose Edge</li> <li>• Xxx...</li> <li>• MDF Table, Steel legs &amp; Modesty, Bullnose Edge</li> <li>• Xxx...</li> <li>• Xxx...</li> <li>• Xxx...</li> <li>• Xxx...</li> </ul>	<ul style="list-style-type: none"> <li>• Xxx...</li> <li>• <b>MDF Table, powder coated Steel legs &amp; Modesty</b></li> <li>• Xxx...</li> <li>• <b>MDF Table, powder coated Steel legs &amp; Modesty</b></li> <li>• Xxx...</li> <li>• Xxx...</li> <li>• Xxx...</li> <li>• Xxx...</li> </ul>
<p>Lot No. 2 - CONFERENCE TABLE 12 SEATER</p>	<ul style="list-style-type: none"> <li>• Xxx...</li> <li>• Xxx...</li> <li>• MFC Board - White Matte finish</li> <li>• Xxx...</li> <li>• Xxx...</li> </ul>	<ul style="list-style-type: none"> <li>• Xxx...</li> <li>• Xxx...</li> <li>• <b>MFC Board - White Matte finish (top and legs)</b></li> <li>• Xxx...</li> <li>• Xxx...</li> </ul>
<p>Lot No. 2 - CONFERENCE TABLE 15 SEATER</p>	<p><b>CONFERENCE TABLE 15 SEATER</b></p> <ul style="list-style-type: none"> <li>• Xxx...</li> <li>• Xxx...</li> <li>• Xxx...</li> <li>• Round Edges</li> <li>• Xxx...</li> </ul>	<p><b>CONFERENCE TABLE (U-shape)</b></p> <ul style="list-style-type: none"> <li>• Xxx...</li> <li>• Xxx...</li> <li>• Xxx...</li> <li>• <del>Round Edges</del></li> <li>• <del>&lt;deleted&gt;</del></li> <li>• Xxx...</li> </ul>
<p>Lot No. 3 - OFFICE TABLE</p>	<ul style="list-style-type: none"> <li>• Xxx...</li> <li>• Powder coated steel legs and modesty, bullnose edge, 120Wx70Dx75Hcm X 25mm thickness table top; <i>Variance of ±1 cm is accepted</i></li> <li>• Xxx...</li> <li>• Xxx...</li> <li>• Xxx...</li> <li>• Xxx...</li> </ul>	<ul style="list-style-type: none"> <li>• Xxx...</li> <li>• <b>Powder coated steel legs and modesty</b></li> <li>• <b>Dimension: 120Wx70Dx75Hcm X 25mm thickness table top; Variance of ±1 cm is accepted</b></li> <li>• Xxx...</li> <li>• Xxx...</li> <li>• Xxx...</li> <li>• Xxx...</li> </ul>
<p>Lot No. 3 - MEETING TABLE (EXECOM/MANCOM)</p>	<ul style="list-style-type: none"> <li>• Xxx...</li> <li>• Xxx...</li> <li>• Materials: MDF board</li> </ul>	<ul style="list-style-type: none"> <li>• Xxx...</li> <li>• Xxx...</li> </ul>

PARTICULARS	FROM	TO
	<ul style="list-style-type: none"> <li>• Xxx...</li> <li>• Xxx...</li> <li>• Xxx...</li> </ul>	<ul style="list-style-type: none"> <li>• <b>Materials: MFC board top and legs</b></li> <li>• Xxx...</li> <li>• Xxx...</li> <li>• Xxx...</li> </ul>

Please see attached **revised Technical Specifications for Lot Nos. 1, 2 and 3 and sample photo and floor plan/layout for the prospective bidder's reference only.** Submission of not updated Technical Specifications based on the amendments/changes made shall be ground of your disqualification for award for each lot.

**F. Section VIII. Bidding Forms - Price Proposal Forms**

PARTICULARS	FROM	TO
Lot No. 1 - Combi Roller Window Blinds – unit of measure	piece	sq.m.
Lot No. 2 - Executive Table with Side Table – unit of measure	piece	set
Lot No. 2 - Office Sofa Set – unit of measure	piece	set

Please see attached **revised Price Proposal Form.** Submission of not updated Price Proposal Form based on the amendments/changes made shall be ground of your disqualification for award for each lot.

**III. Deadline for the Submission and Receipt of Bids**

The deadline for the submission and receipt of bids is on **26 August 2020, 09:00 a.m.** Bids must be delivered to the **BAC Secretariat Office, Ground Floor Matapat Building, DSWD Central Office. Late Bids will not be accepted.**

The Opening of Bids is on **26 August 2020, 10:30 a.m.** to be held at the **Auditorium, 4<sup>th</sup> Floor Magiliw Building, DSWD Central Office, IBP Road, Constitution Hills, Quezon City.**

**IV. Issuance of Bidding Documents**

The issuance of bidding documents is until **09:00 a.m. of 26 August 2020.**

This Bid Bulletin shall form part of the bidding documents.

Please be guided accordingly.

  
**FELICISIMO C. BUDIONGAN**  
*Undersecretary and  
Bids and Awards Committee Chairperson*

Please accomplish the portion below and send it to facsimile no. (02) 951-7116 or email at [bacsec@dswd.gov.ph](mailto:bacsec@dswd.gov.ph).



Received from DSWD, Supplemental/Bid Bulletin No. 1 for the Supply, Delivery and Installation of Office Furniture for the DSWD Central Office - Malasakit Building (ITB No. GOP/20-DSWD-044);

RECEIVED BY : \_\_\_\_\_ DATE: \_\_\_\_\_  
(SIGNATURE OVER PRINTED NAME)

DESIGNATION : \_\_\_\_\_




COMPANY : \_\_\_\_\_

**SAMPLE PHOTO**  
(for prospective bidders reference only)


LOT NO.	PARTICULAR	SAMPLE PHOTO
1	<b>Side Panel (Modular Partition)</b>	
	<b>Front Panel (Modular Partition)</b>	 <p data-bbox="740 1469 1310 1541"><i>Note: Mobile cabinet and desktop are not included.</i></p>

LOT NO.	PARTICULAR	SAMPLE PHOTO
	<b>Combi Roller Window Blinds</b>	
2	<b>Executive Table with Side Table</b>	
	<b>Office Sofa Set</b>	



LOT NO.	PARTICULAR	SAMPLE PHOTO
	<b>Conference Table 12 Seater</b>	
	<b>Conference Table 15 Seater</b>	
<b>3</b>	<b>Office Table</b>	

LOT NO.	PARTICULAR	SAMPLE PHOTO
	<b>Office Chair</b>	
	<b>Mobile Pedestal</b>	
	<b>Executive Chair</b>	

LOT NO.	PARTICULAR	SAMPLE PHOTO
	<b>Meeting Table 6 Seater</b>	



AS-BGMD-0001 I REV 01 / 06 NOVEMBER 2019

PROJECT NAME:

WINDOW BLINDS REFERENCE LAYOUT

LOCATION: MALASAKIT BUILDING, DSWD CENTRAL OFFICE

SHEET CONTENT:

GROUND FLOOR LAYOUT

APPROVED BY

CONFORMED BY

(Position: )

CHECKED BY

Engr. ALFREDO C. EVANGELISTA II

OIC-Chief, AS-BGMD

PREPARED/DESIGNED BY

Engr. ALYSSA JEAN P. PASCUA

Engineer II, AS-BGMD

PROJECT/TA No.:

DATE SUBMITTED:

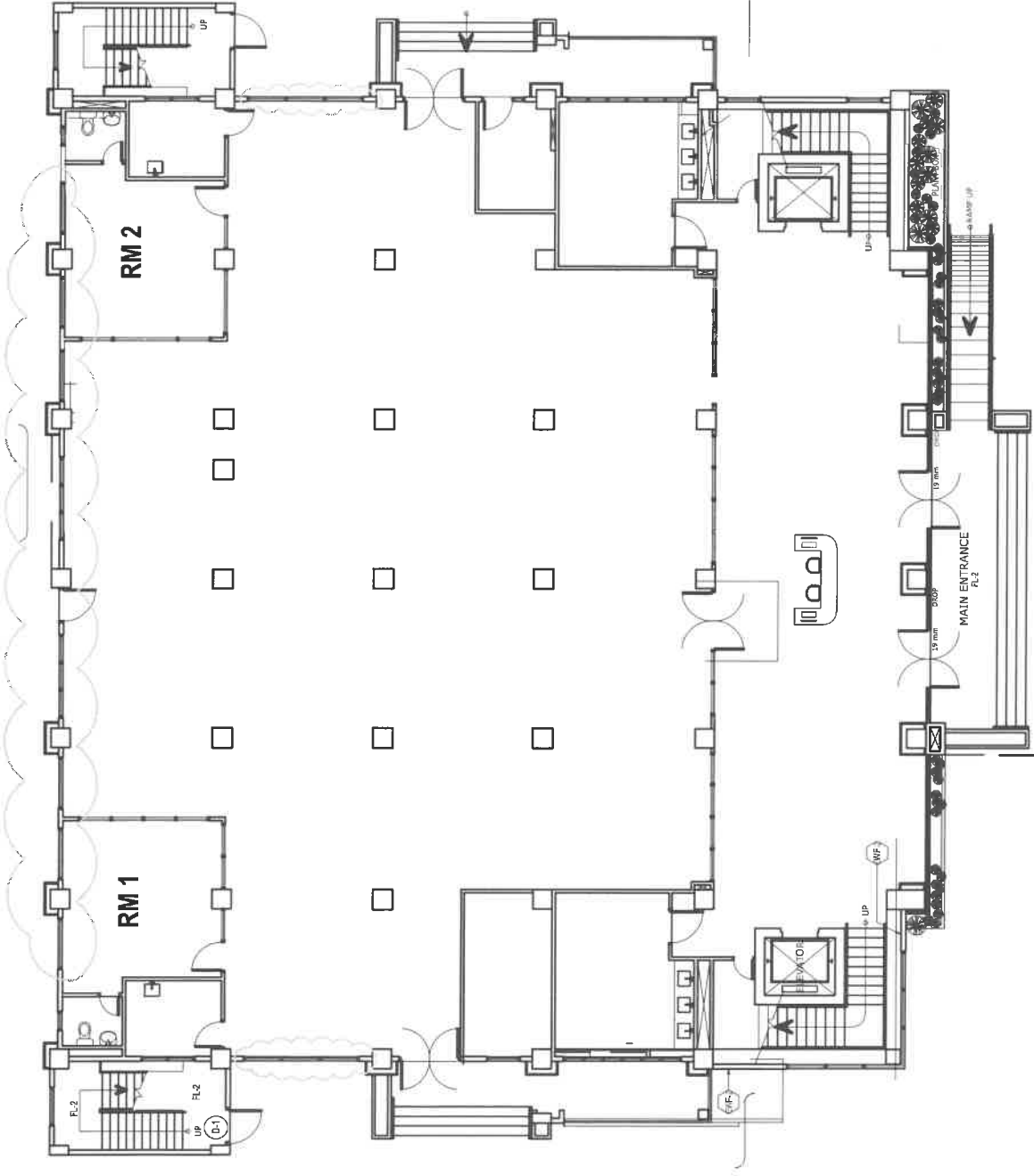
DRAWING STATUS

DATE DESCRIPTION/REMARKS BY

SHEET NUMBER

A 01

A4  
\*1ZE



GROUND FLOOR PLAN  
SCALE 100 M. 1:

WINDOW BLINDS LAYOUT



AS-BGMD-0001 | REV 01 / 06 NOVEMBER 2019

PROJECT NAME:

WINDOW BLINDS REFERENCE LAYOUT

LOCATION: MALASAKIT BUILDING,  
DSWD CENTRAL OFFICE

SHEET CONTENT:

SECOND FLOOR LAYOUT

APPROVED BY

CONFORMED BY

(Position: )

CHECKED BY

Engr. ALFREDO C. EVANGELISTA II  
OIC-Chief, AS-BGMD

PREPARED/DESIGNED BY

Engr. ALYSSA JEAN P. PASCUA  
Engineer II, AS-BGMD

PROJECT/TA No:

DATE SUBMITTED:

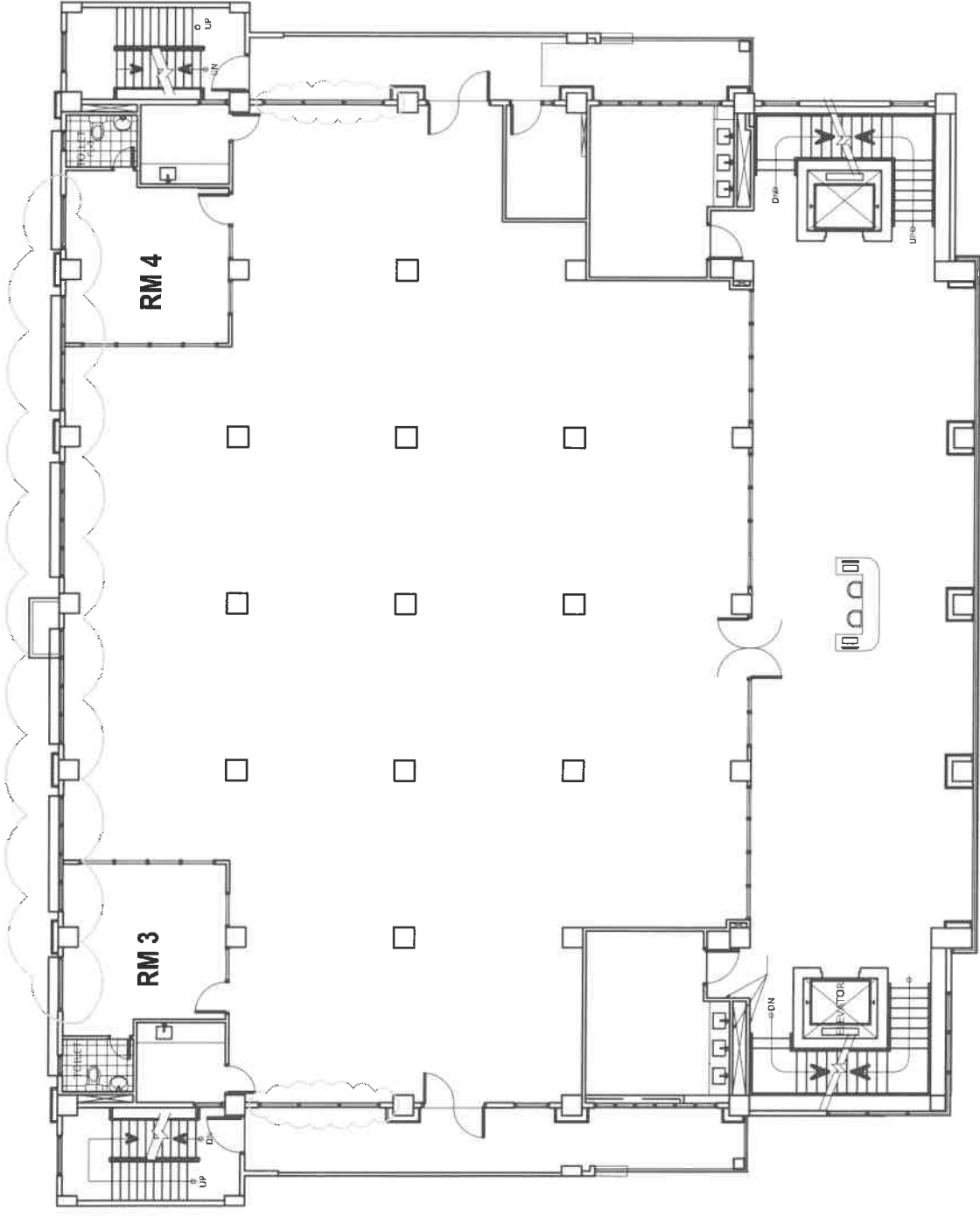
DRAWING STATUS

DATE DESCRIPTION/REMARKS BY

SHEET NUMBER

A 02

A4  
SIZE



WINDOW BLINDS LAYOUT



SECOND FLOOR PLAN  
SCALE 1 : 100 M.



AS-BGMD-0001 I REV 01 / 06 NOVEMBER 2019

PROJECT NAME :

WINDOW BLINDS REFERENCE LAYOUT

LOCATION :

MALASAKIT BUILDING,  
DSWD CENTRAL OFFICE

SHEET CONTENT :

THIRD FLOOR LAYOUT

APPROVED BY

CONFORMED BY

(Position: \_\_\_\_\_ )

CHECKED BY

Engr. ALFREDO C. EVANGELISTA II

OIC-Chief, AS-BGMD

PREPARED/DESIGNED BY

Engr. ALYSSA JEAN P. PASCUA

Engineer II, AS-BGMD

PROJECT/TA No.:

DATE SUBMITTED:

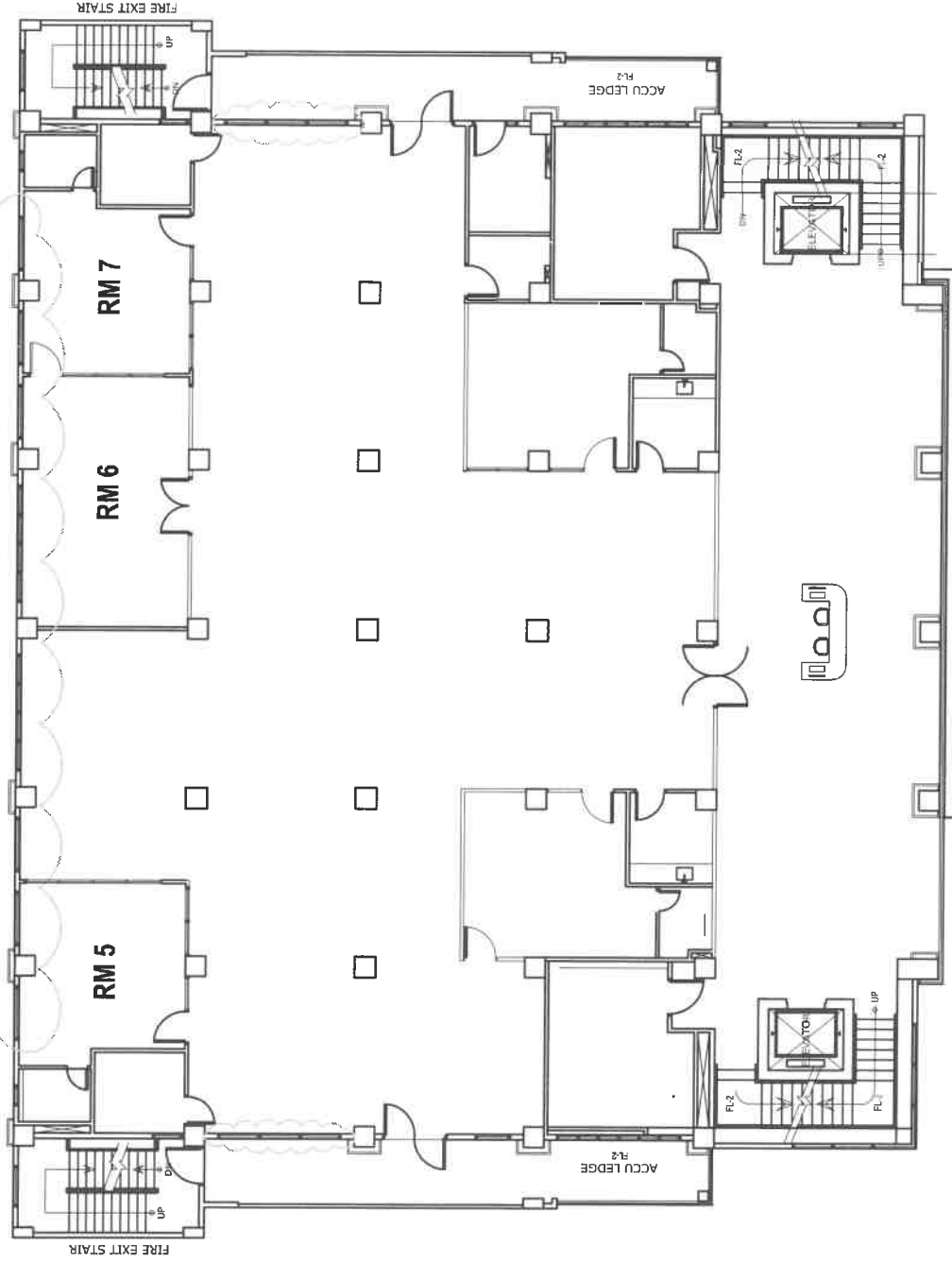
DRAWING STATUS

DATE DESCRIPTION/REMARKS BY

SHEET NUMBER

A 03

A4  
SIZE



THIRD FLOOR PLAN  
SCALE 1 : 10 PL.



WINDOW BLINDS LAYOUT



AS-BGMD-0001 | REV 01 / 06 NOVEMBER 2019

PROJECT NAME :

WINDOW BLINDS REFERENCE LAYOUT

LOCATION :  
MALASAKIT BUILDING,  
DSWD CENTRAL OFFICE

SHEET CONTENT :

LEFT SIDE ELEVATION LAYOUT

APPROVED BY

CONFORMED BY

CHECKED BY

(Position: \_\_\_\_\_ )

Engr. ALFREDO C. EVANGELISTA II

OIC-Chief, AS-BGMD

PREPARED/DESIGNED BY

Engr. ALYSSA JEAN P. PASCUA

Engineer II, AS-BGMD

PROJECT/TA No.:

DATE SUBMITTED:

DRAWING STATUS

DATE DESCRIPTION/REMARKS BY

SHEET NUMBER

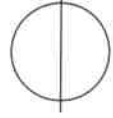
A 04

A4  
SIZE



# LEFT SIDE ELEVATION

SCALE  
1 : 100 m.





PROJECT NAME :

WINDOW BLINDS REFERENCE LAYOUT

LOCATION :  
MALASAKIT BUILDING,  
DSWD CETRAL OFFICE

SHEET CONTENT :

RIGHT SIDE ELEVATION LAYOUT

APPROVED BY

CONFORMED BY

CHECKED BY

(Position: )

Engr. ALFREDO C. EVANGELISTA II  
OIC-Chief, AS-BGMD

PREPARED/DESIGNED BY

Engr. ALYSSA JEAN P. PASCUA  
Engineer II, AS-BGMD

PROJECT/TA No.:

DATE SUBMITTED:

DRAWING STATUS

DATE DESCRIPTION/REMARKS BY

SHEET NUMBER

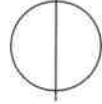
A 05

A4  
SIZE



**RIGHT SIDE ELEVATION**

SCALE  
1 : 100 m.







AS-BGMD-0001 | REV 01 / 06 NOVEMBER 2019

PROJECT NAME :

WINDOW BLINDS REFERENCE LAYOUT

LOCATION :  
MALASAKIT BUILDING,  
DSWD CENTRAL OFFICE

SHEET CONTENT :

REAR ELEVATION LAYOUT

APPROVED BY

CONFORMED BY

CHECKED BY

(Position: \_\_\_\_\_ )

Engr. ALFREDO C. EVANGELISTA II

OIC-Chief, AS-BGMD

PREPARED/DESIGNED BY

Engr. ALYSSA JEAN P. PASCUA

Engineer II, AS-BGMD

PROJECT/TA No.:

DATE SUBMITTED:

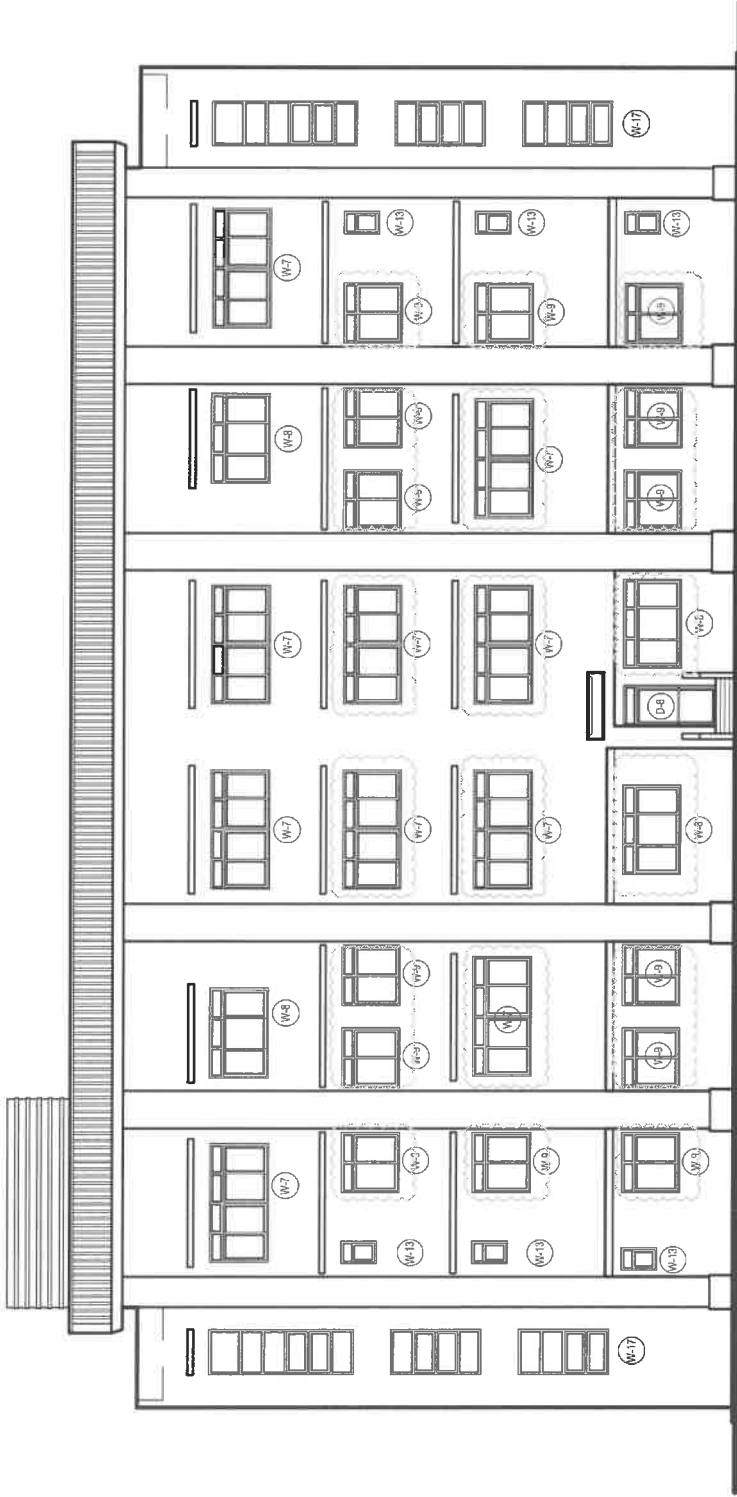
DRAWING STATUS

DATE DESCRIPTION/REMARKS BY

SHEET NUMBER

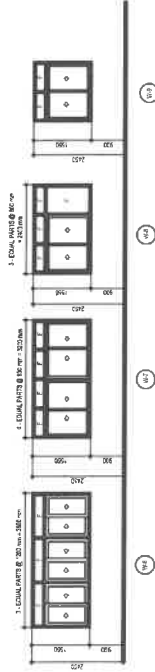
A 06

A4  
SIZE



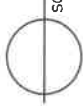
**REAR ELEVATION**

SCALE 1 : 100



**WINDOW SCHEDULE**

SCALE NTS



# *Schedule of Requirements*

## **Supply, Delivery and Installation of Office Furniture for the DSWD Central Office - Malasakit Building**

### **I. Summary of Deliverables:**

<b>Lot No.</b>	<b>Title of the Project</b>	<b>Particulars</b>	<b>Quantity</b>	<b>Unit</b>	<b>Delivery Period</b>
1	Supply, Delivery and Installation of Office Furniture	Side Panel (Modular Partition)	306	piece	Seventy-Five (75) Calendar Days upon receipt of Notice to Proceed
		Front Panel (Modular Partition)	174	piece	
		Combi Roller Window Blinds	101	sq.m.	
2	Supply and Delivery of Office Furniture	Executive Table with Side Table	8	set	Sixty (60) Calendar Days upon receipt of Notice to Proceed
		Office Sofa Set	8	set	
		Conference Table 12 Seater	2	piece	
		Conference Table 15 Seater	1	piece	
3	Supply and Delivery of Office Furniture	Office Table	356	piece	Sixty (60) Calendar Days upon receipt of Notice to Proceed
		Office Chair	356	piece	
		Mobile Pedestal	355	piece	
		Executive Chair	8	piece	
		Meeting Table 6 Seater	8	piece	

### **II. Delivery Site**

Department of Social Welfare and Development (DSWD) – Central Office (CO) – Supply Unit – Warehouse

### **III. Terms of Payment:**

One-time payment for each lot. Processing of payment shall be within fifteen (15) to thirty (30) days upon completion of documentary requirements subject for accounting rules and regulations per billing statement.

Name of Bidder: \_\_\_\_\_

Name of Authorized Representative: \_\_\_\_\_

Signature of Authorized Representative: \_\_\_\_\_

Date: \_\_\_\_\_

**\*\*\*THIS DOCUMENT MUST BE ATTACHED TO THE  
TECHNICAL SPECIFICATIONS\*\*\***

# *Technical Specifications*

## **Supply, Delivery and Installation of Office Furniture for the DSWD Central Office - Malasakit Building**

Lot No.	DSWD Specifications	Bidder's Specifications <sup>14</sup>
	<b>SUPPLY, DELIVERY AND INSTALLATION OF OFFICE FURNITURE</b>	
	<b>SIDE PANEL (MODULAR PARTITION)</b> <ul style="list-style-type: none"> <li>• Low office partition / cubicles / workstation blue fabric with glass with frosted sticker</li> <li>• Panel thickness : 4.50 to 5 cm</li> <li>• Dimension: 0.7 meter x 1.2 meter H; <i>Variance of ±1 cm is accepted</i></li> <li>• Glass size H27cm; <i>Variance of ±1 cm is accepted</i></li> <li>• With 6 months warranty</li> <li>• <i>Must submit sample including swatches of fabric prior to approval of the end-user</i></li> <li>• <i>Must set-up one set prior to installation of all units</i></li> </ul>	<b>Detailed Specifications:</b>
1	<b>FRONT PANEL (MODULAR PARTITION)</b> <ul style="list-style-type: none"> <li>• Low office partition / cubicles / workstation blue fabric with glass with frosted sticker</li> <li>• With Built in outlet for LAN particularly RJ45 Network Nodes Socket Faceplate 2-gang and Universal outlet with grounding 2-gang electrical wiring</li> <li>• Panel thickness : 4.5 to 5 cm</li> <li>• Dimension: 1.2 meter x 1.2 meter H; <i>Variance of ±1 cm is accepted</i></li> <li>• Glass size H27cm; <i>Variance of ±1 cm is accepted</i></li> <li>• With 6 months warranty</li> <li>• <i>Must submit sample including swatches of fabric prior to approval of the end-user</i></li> </ul>	<b>Detailed Specifications:</b>

<sup>14</sup> **IMPORTANT NOTE:** Bidders must state here either "Comply" or "Not Comply" against each of the individual parameters of each Specification stating the corresponding performance parameter of the equipment offered. Statements of "Comply" or "Not Comply" must be supported by evidence in a Bidders Bid and cross-referenced to that evidence. Evidence shall be in the form of manufacturer's unamended sales literature, unconditional statements of specification and compliance issued by the manufacturer, samples, independent test data etc., as appropriate. A statement that is not supported by evidence or is subsequently found to be contradicted by the evidence presented will render the Bid under evaluation liable for rejection. A statement either in the Bidders statement of compliance or the supporting evidence that is found to be false either during Bid evaluation, post qualification or the execution of the Contract may be regarded as fraudulent and render the Bidder or supplier liable for prosecution.

	<ul style="list-style-type: none"> <li>• <i>Must set-up one set prior to installation of all units</i></li> </ul>	
	<p><b>COMBI ROLLER WINDOW BLINDS</b></p> <ul style="list-style-type: none"> <li>• Combi Roller Blinds, Fabric in Horizontal Pattern, Manually Operated.</li> <li>• Accessories: Aluminum Top Tube, Aluminum Cassette Top Cover, Aluminum Bottom Rails and Plastic Bead Chain.</li> <li>• With 6 months warranty</li> <li>• Must verify actual dimension at Malasakit Building (GF to 3F Office Area only) through site inspection</li> <li>• <i>Must submit sample including swatches of fabric prior to approval of the end-user</i></li> </ul>	<b>Detailed Specifications:</b>

Name of Bidder: \_\_\_\_\_

Name of Authorized Representative: \_\_\_\_\_

Signature of Authorized Representative: \_\_\_\_\_

Date: \_\_\_\_\_

# *Technical Specifications*

## **Supply, Delivery and Installation of Office Furniture for the DSWD Central Office - Malasakit Building**

<b>Lot No.</b>	<b>DSWD Specifications</b>	<b>Bidder's Specifications<sup>15</sup></b>
<b>2</b>	<b>SUPPLY AND INSTALLATION OF OFFICE FURNITURE</b>	
	<p><b>EXECUTIVE TABLE WITH SIDE TABLE</b></p> <ul style="list-style-type: none"> <li>• Freestanding table</li> <li>• MDF Table, powder coated Steel legs &amp; Modesty</li> <li>• 0.45 meter W x 1 meter D x 0.7 meter H – SIDE; <i>Variance of ±1 cm is accepted</i></li> <li>• MDF Table, powder coated Steel legs &amp; Modesty</li> <li>• 1.8 meter W x 0.7 meter D x 0.7 meter H – MAIN; <i>Variance of ±1 cm is accepted</i></li> <li>• With 1 year warranty</li> <li>• <i>Mahogany color</i></li> <li>• <i>Must submit brochure prior to approval of the end-user</i></li> </ul>	<b>Detailed Specifications:</b>
	<p><b>OFFICE SOFA SET</b></p> <ul style="list-style-type: none"> <li>• Sofa Set 3 – 2 Seater</li> <li>• Dimension : W2100XD750XH800mm (3 Seater); <i>Variance of ±1 cm is accepted</i></li> <li>• W1500XD750DH800mm (2 Seater); <i>Variance of ±1 cm is accepted</i></li> <li>• Materials Synthetic Leather</li> <li>• Black finish</li> <li>• With 1 year warranty</li> </ul>	<b>Detailed Specifications:</b>
<p><b>CONFERENCE TABLE 12 SEATER</b></p> <ul style="list-style-type: none"> <li>• 12 Seater</li> <li>• Dimension: W3000 X D1200 X H750 mm X 25 mm thk table top; <i>Variance of ±1 cm is accepted</i></li> </ul>	<b>Detailed Specifications:</b>	

<sup>15</sup> **IMPORTANT NOTE:** Bidders must state here either “Comply” or “Not Comply” against each of the individual parameters of each Specification stating the corresponding performance parameter of the equipment offered. Statements of “Comply” or “Not Comply” must be supported by evidence in a Bidders Bid and cross-referenced to that evidence. Evidence shall be in the form of manufacturer’s unamended sales literature, unconditional statements of specification and compliance issued by the manufacturer, samples, independent test data etc., as appropriate. A statement that is not supported by evidence or is subsequently found to be contradicted by the evidence presented will render the Bid under evaluation liable for rejection. A statement either in the Bidders statement of compliance or the supporting evidence that is found to be false either during Bid evaluation, post qualification or the execution of the Contract may be regarded as fraudulent and render the Bidder or supplier liable for prosecution.

Lot No.	DSWD Specifications	Bidder's Specifications <sup>15</sup>
	<ul style="list-style-type: none"> <li>• MFC Board - White Matte finish (top and legs)</li> <li>• Round Edges</li> <li>• With 1 year warranty</li> </ul>	
	<p><b>CONFERENCE TABLE (U-shape)</b></p> <ul style="list-style-type: none"> <li>• 15 Seater</li> <li>• 3 pcs - 2400mm L X 600mm D X 750mm Ht for Center, Right and Left Table; <i>Variance of ±1 cm is accepted</i></li> <li>• MFC laminated Finish - 25mm thk table top; 18mm thk legs and modesty panel</li> <li>• With 1 year warranty</li> </ul>	<p><b>Detailed Specifications:</b></p>

Name of Bidder: \_\_\_\_\_

Name of Authorized Representative: \_\_\_\_\_

Signature of Authorized Representative: \_\_\_\_\_

Date: \_\_\_\_\_

# *Technical Specifications*

## **Supply, Delivery and Installation of Office Furniture for the DSWD Central Office - Malasakit Building**

Lot No.	DSWD Specifications	Bidder's Specifications <sup>16</sup>
<b>3</b>	<b>SUPPLY AND INSTALLATION OF OFFICE FURNITURE</b>	
	<b>OFFICE TABLE</b> <ul style="list-style-type: none"> <li>• MFC Freestanding table</li> <li>• Powdered coated steel legs and modesty</li> <li>• Dimension: 120Wx70Dx75Hcm X 25mm thickness table top; <i>Variance of ±1 cm is accepted</i></li> <li>• Finish Light gray top and frame</li> <li>• With hole and grommet</li> <li>• 1 year warranty</li> <li>• <i>Submit sample prior to approval</i></li> </ul>	<b>Detailed Specifications:</b>
	<b>OFFICE CHAIR</b> <ul style="list-style-type: none"> <li>• Midback chair with armrest</li> <li>• Material: Backrest – Mesh/net, Seat – Fabric Black Finish, PVC armrest and heavy duty metal base with caster wheel, gaslift</li> <li>• <i>Maximum</i> weight capacity of 250 lbs,</li> <li>• With 1 year warranty</li> </ul>	<b>Detailed Specifications:</b>
<b>MOBILE PEDESTAL</b> <ul style="list-style-type: none"> <li>• Mobile Pedestal with 3 Drawers including 1 Central Lock, 1 Pen Tray, 1 File Divider and 5 Castors</li> <li>• Material: Steel with Powder Coating</li> <li>• Actual Dimensions: 40 (w) x 56.5 (d) x 65.5 (h) cm; <i>Variance of ±1 cm is accepted</i></li> <li>• Color: Gray</li> <li>• With 6 months warranty</li> </ul>	<b>Detailed Specifications:</b>	

<sup>16</sup> **IMPORTANT NOTE:** Bidders must state here either “Comply” or “Not Comply” against each of the individual parameters of each Specification stating the corresponding performance parameter of the equipment offered. Statements of “Comply” or “Not Comply” must be supported by evidence in a Bidders Bid and cross-referenced to that evidence. Evidence shall be in the form of manufacturer’s unamended sales literature, unconditional statements of specification and compliance issued by the manufacturer, samples, independent test data etc., as appropriate. A statement that is not supported by evidence or is subsequently found to be contradicted by the evidence presented will render the Bid under evaluation liable for rejection. A statement either in the Bidders statement of compliance or the supporting evidence that is found to be false either during Bid evaluation, post qualification or the execution of the Contract may be regarded as fraudulent and render the Bidder or supplier liable for prosecution.



Lot No.	DSWD Specifications	Bidder's Specifications <sup>16</sup>
	<p><b>EXECUTIVE CHAIR</b></p> <ul style="list-style-type: none"> <li>• High back chair with armrest</li> <li>• Fabric Seat &amp; Back</li> <li>• PVC or Steel armrest and starbase</li> <li>• With lifting and reclined mechanism for adjustable height and comfort</li> <li>• Caster Wheel</li> <li>• Black Finish</li> <li>• Weight capacity <i>250lbs maximum</i></li> <li>• With 1 year warranty</li> </ul>	<p><b>Detailed Specifications:</b></p>
	<p><b>MEETING TABLE (EXECOM/MANCOM)</b></p> <ul style="list-style-type: none"> <li>• 6 Seater</li> <li>• Dimensions: W2000mm x D1000mm x H750mm; <i>Variance of ±1 cm is accepted</i></li> <li>• Materials: MFC board top and legs</li> <li>• White Matte <i>Finish</i></li> <li>• Curved edge</li> <li>• With 1 year warranty</li> </ul>	<p><b>Detailed Specifications:</b></p>

Name of Bidder: \_\_\_\_\_

Name of Authorized Representative: \_\_\_\_\_

Signature of Authorized Representative: \_\_\_\_\_

Date: \_\_\_\_\_

## Price Proposal Form

Date: \_\_\_\_\_

Invitation to Bid No.: GOP/20-DSWD-044

### Supply, Delivery and Installation of Office Furniture for the DSWD Central Office - Malasakit Building

Lot No.	Title of the Project	Particulars	Quantity	Unit	Unit Price <i>(in Phil Peso)</i>	Total Price <i>(in Phil Peso)</i>
1	Supply, Delivery and Installation of Office Furniture	Side Panel (Modular Partition)	306	piece		
		Front Panel (Modular Partition)	174	piece		
		Combi Roller Window Blinds	101	sq.m.		
<b>TOTAL BID PRICE FOR LOT NO. 1</b>						
2	Supply and Delivery of Office Furniture	Executive Table with Side Table	8	set		
		Office Sofa Set	8	set		
		Conference Table 12 Seater	2	piece		
		Conference Table 15 Seater	1	piece		
<b>TOTAL BID PRICE FOR LOT NO. 2</b>						
3	Supply and Delivery of Office Furniture	Office Table	356	piece		
		Office Chair	356	piece		
		Mobile Pedestal	355	piece		
		Executive Chair	8	piece		
		Meeting Table 6 Seater	8	piece		
<b>TOTAL BID PRICE FOR LOT NO. 3</b>						

NOTE: In case of discrepancy between unit price and total price, the unit price will prevail. Contract Price is inclusive of all applicable taxes. Indicate "No Bid" for lot/s the bidders do not intend to participate.

Name of Bidder: \_\_\_\_\_

Name of Authorized Representative: \_\_\_\_\_

Signature of Authorized Representative: \_\_\_\_\_

Date: \_\_\_\_\_